



MiWings

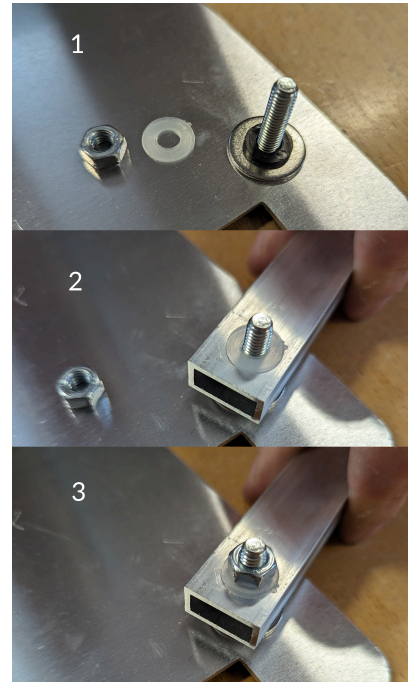
INSTRUCTIONS

We have a video guide too

Visit <https://thetailcompany.com/tutorials>

MiWings first assembly

- » Before you add all the feathers, its good to attach the wings to the backplate, connect the power and control, and do a quick test.
- » Screw the wing parts to the backplate by matching the coloured dots on each part. Use the washers we supply when adding them . **See image ->**
- » Connect the power lead to the top of the battery, add the cable to the control box and switch it on. Make sure the area around you is clear! Then using the remote, press the up button. MiWings will open! You are now ready to attach the underfeathers.
- » You may have two remotes in your kit. Only one is programmed to control your wings. Keep the other one safe if you have it.

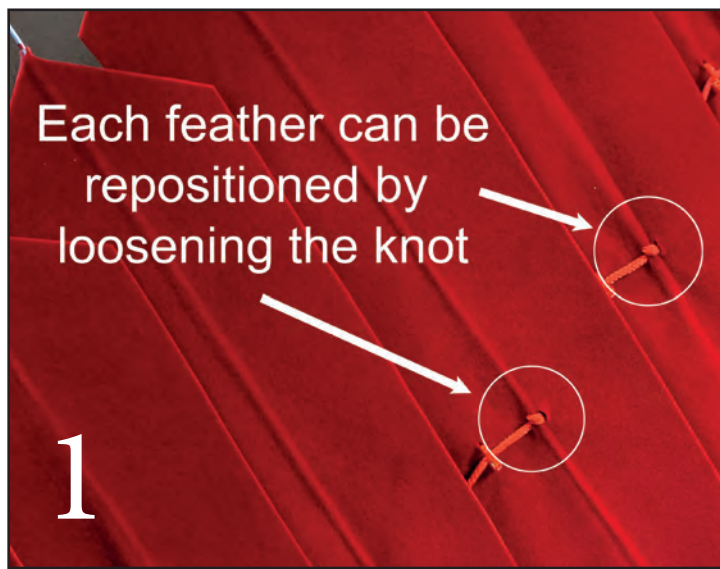


Overview

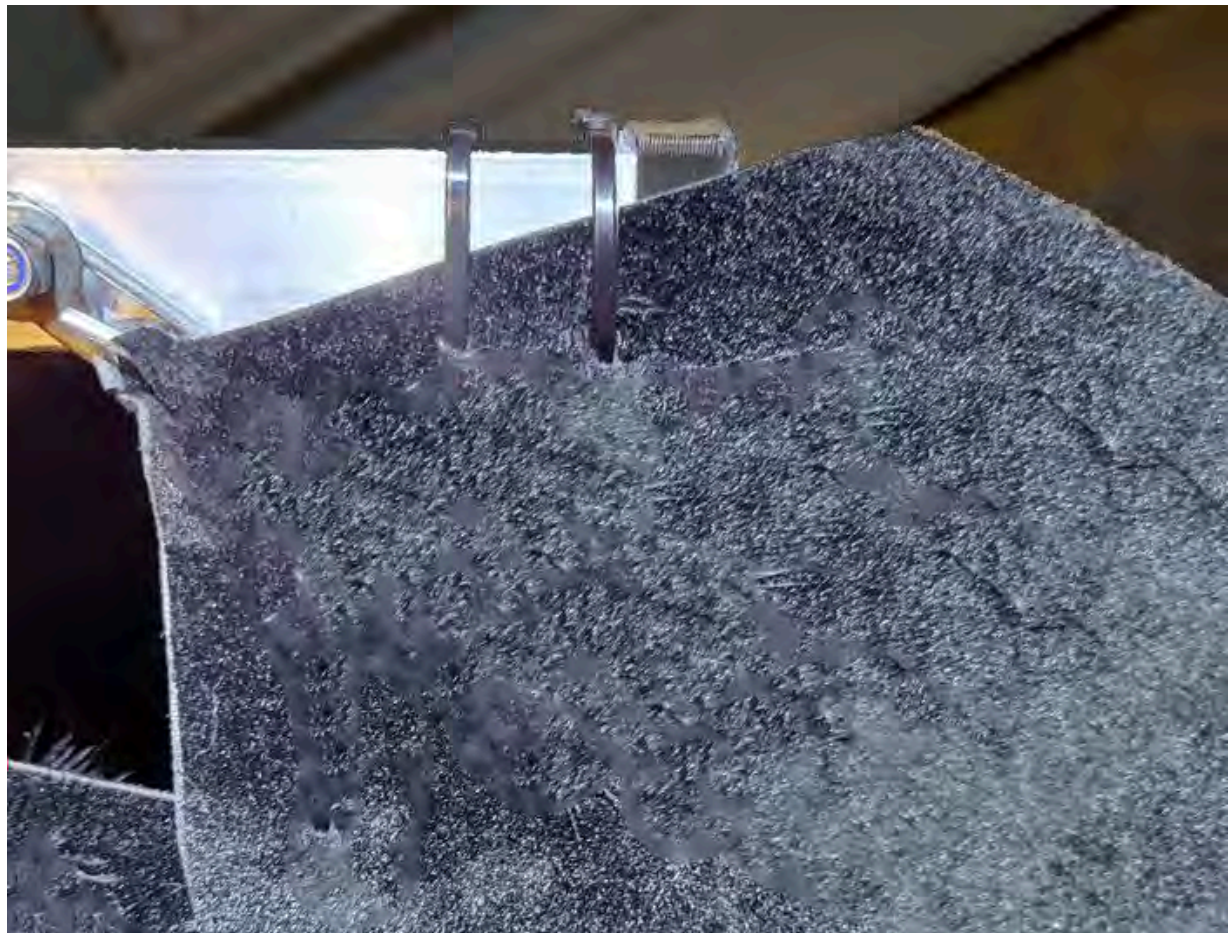
- » The feathered "covers" that drape over the frame are called Shawls. They are identical so it doesnt matter which wing they are on.
- » The Underfeathers hang from the metal frame.
- » The Shawls stay on the wing by being **loosely** tied either to the metal arms, or through the Underfeathers.

Attaching the underfeathers

- » Attach the underfeathers to each wing. There is a left and right set. Remove the nut, put the metal loop of the feather on and replace the nut. Then tighten. Its easier to do this if you grip the nut with a pair of pliers and use a screwdriver to turn the screw. As before, dont over tighten them. The feathers need to be able to move when the wings open.
- » Underfeathers are linked by a cord, and each feather can be repositioned a little across its length to your liking. In the center of each feather, you can loosen the knot slightly and move the feather left or right. *(Image 1 on next page)* [We made a little video too](#)
- » It looks good when the spacing between the underfeathers approximately matches the spacing between the screw holes that the feathers are attached to. *(Image 2 on next page)*
- » Depending on how you position the feathers, you may end up with some extra cord at the far end of the wing. Simply knot it off, close to the wing. *(Image 3 on next page)*
- » The last two feathers need to be bolted **to the same hole**, unlike the others which are one feather per bolt. These last two feathers are also held with two cable ties and run in the same direction as the metal arm. If the metal loops are too long, gently bend the metal rod with a pair of pliers to suit the new position. *(Image 4 on next page)*



» The end two feathers are attached to the same bolt and fastened with a cable tie



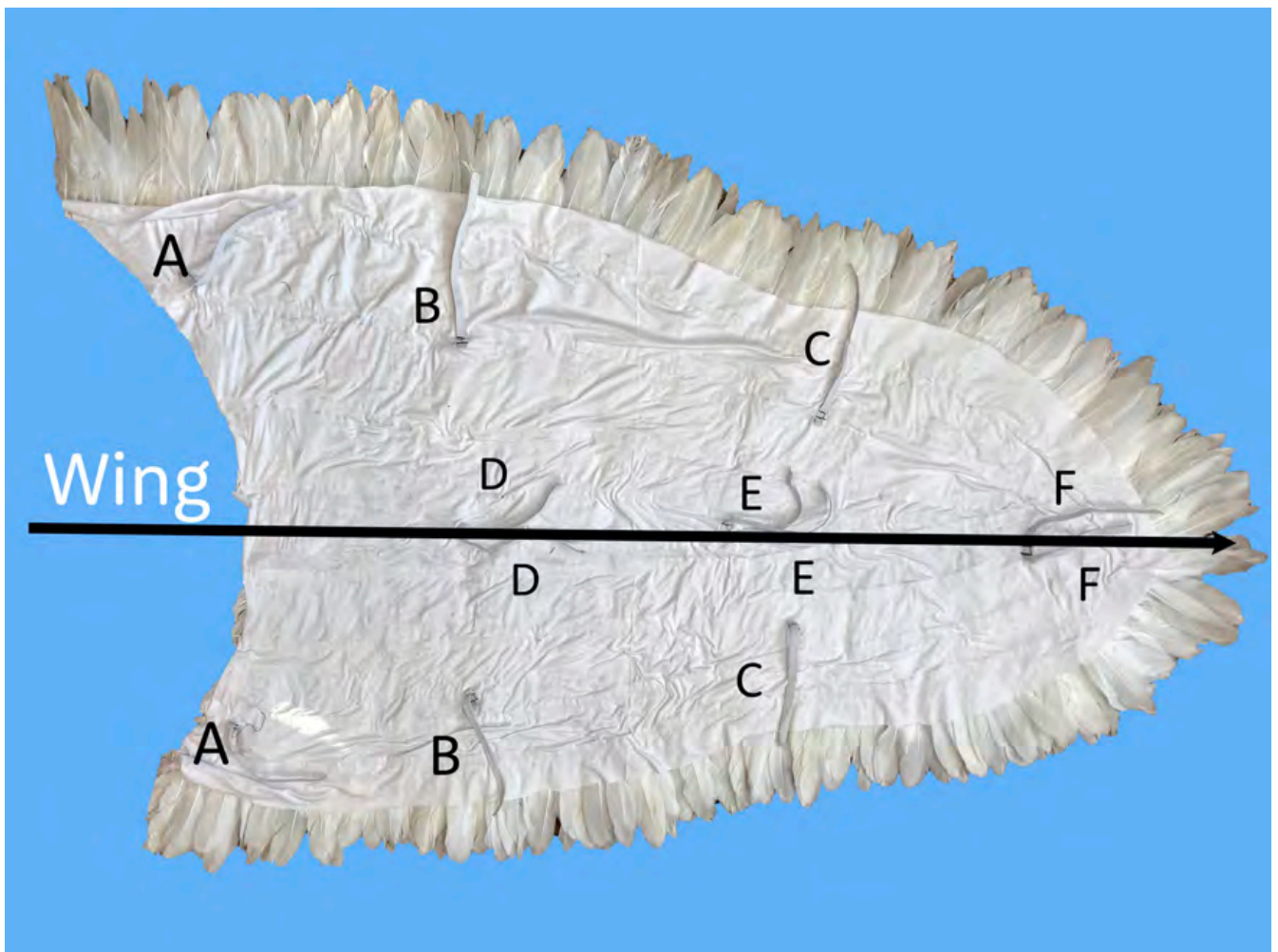
Attaching the shawls

- » With the wings open and lying on the floor, attach the Shawls to each side, using the elastic straps to fasten them around the frame. Alternatively, a second person can attach them whilst they are being worn.

Ties on the outer edge of the shawl are tied through the spaces between the underfeathers to each other. In the picture below, they are labeled A B and C

Ties running down the center of the shawl wrap around the metal bar and tie to themselves. In the image below they are labeled D E and F.

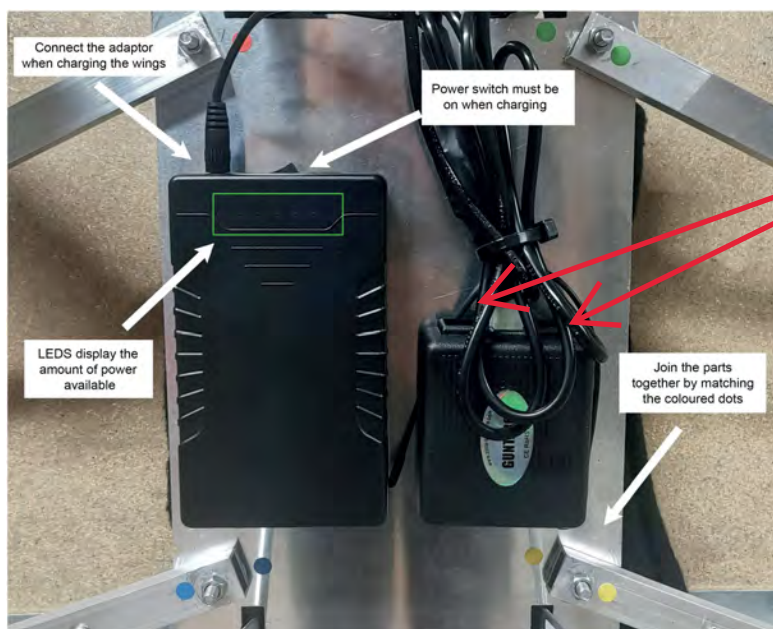
- » Make sure that the shawls are not so tightly attached that they prevent the wings from freely opening and closing. The first few times you open and close them, you may hear some noise as the shawls adapt to their new shape. This is normal.



A, B, C tie to each other through the underfeathers



D, E and F attach to the wing bar



You will find black tape that closes off certain ports on the control box.

Dont take this tape off! It protects the insides of the control box. Leave it on.

IMPORTANT!

Letting the battery drain to zero, then operating the wings, can damage the control box! Always charge up the battery before use, with the power switch set to ON.

Power and charging

- » If you need to charge up MiWings, connect the charger to the socket on the battery pack. The battery pack power switch must be ON for it to charge. The batteries are fully charged in about 8 hours.
- » The LEDs on the battery pack will show you how much charge is there. More green dots, more charge.
- » **IMPORTANT:** Don't start an event with just a few green dots on the battery. The wings will stop working very quickly. Fully charge them before, with the Power Switch on the battery set to ON!
- » Once charged, remove the charger from the battery and connect the wings system cable. With the power switch ON, press a button on the remote control. Be careful!
If the wings are opening or closing but prevented from moving you can damage them and the actuators can get hot! Always make sure you have a clear area around you.

Frequently Asked Questions

- » Although the feathers will be ok in a little rain, MiWings are not waterproof. If its raining, move indoors.
- » The screws that join the metal parts will loosen over time. Tighten them up a little before wearing them.
Dont over tighten them - they need to be able to allow the metal to turn. Just until they meet some resistance! Do this before each time you take them out.
- » If you get marks on the feathers, use a damp cloth to remove them. Never dry clean the feathers.
- » If the underfeathers become bent, straighten them out so that they close and open without too much volume.
- » We give you two remote controllers for MiWings. Dont lose them! New ones will need to be "paired" with the wings to work.
- » The thin black cable that hangs down from the control box is the aerial for the remote control (in case you're wondering!) It's important!
- » This is a handmade item - some adjustment to it, to suit your useage, is normal.
- » The underfeathers and feather shawls can be changed to different colors.

[Our website has details.](#)

Disclaimer

Please read the instructions for use above in full before using your Tail Company Gear. Not familiarising yourself with the proper method of use could cause damage to the gear, or to yourself, or both. This text is also subject to change. An up-to-date version will form part of the file available at <https://thetailcompany.com/eargear.pdf> or <https://thetailcompany.com/mitail.pdf> or <https://thetailcompany.com/miwings.pdf>

Support is also available on our website, through the chat service, or on our Telegram group. By using MiWings, you hereby acknowledge that you have read this disclaimer and that you understand and agree to abide by the terms and conditions herein.

The Mechanical Tail Company Ltd accept no liability for damage, injury or legal responsibility incurred directly or indirectly from the use of this product. This product is not a toy, and should not be used by children under the age of thirteen years without supervision by an adult. Do not use the product if it appears damaged in any way.

Safety

Handle your gear with care. They can be damaged, functionally impaired or broken if dropped, burned, punctured, crushed, disassembled or if exposed to liquid, excessive heat or other environmental conditions. Our items should be kept out of the reach of children and pets under 13 years of age when unsupervised. MiWings, MiTail, FlutterWings and EarGear are not toys.

Only use the supplied charging equipment for your Tail Company gear. Use of incorrect charging apparatus that does not meet international standards can cause fire, electric shock, injury or damage to you or the gear or other property.

Do not charge EarGear, MiTail or MiWings unattended. If at any time the items give off an odour, exude smoke, or show other signs of damage, stop using the items immediately, and dispose of them in the correct manner.

Environmental Requirements

Operating temperature: -10 to 40 C / 14 to 104 F Charging temperature: 10 to 30 C / 50 to 86 F Storage temperature: 0 to 30 C / 32 to 86 F